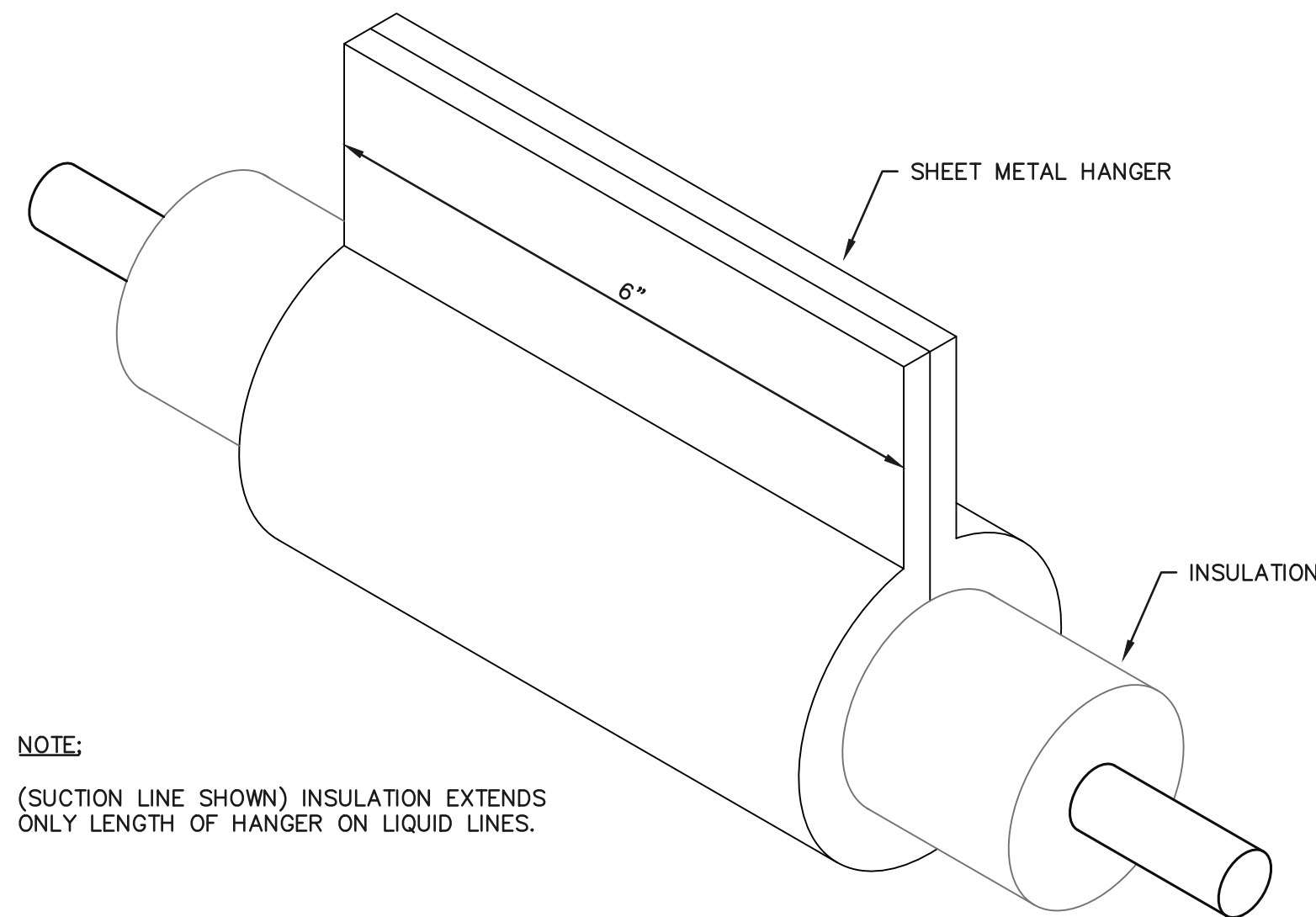
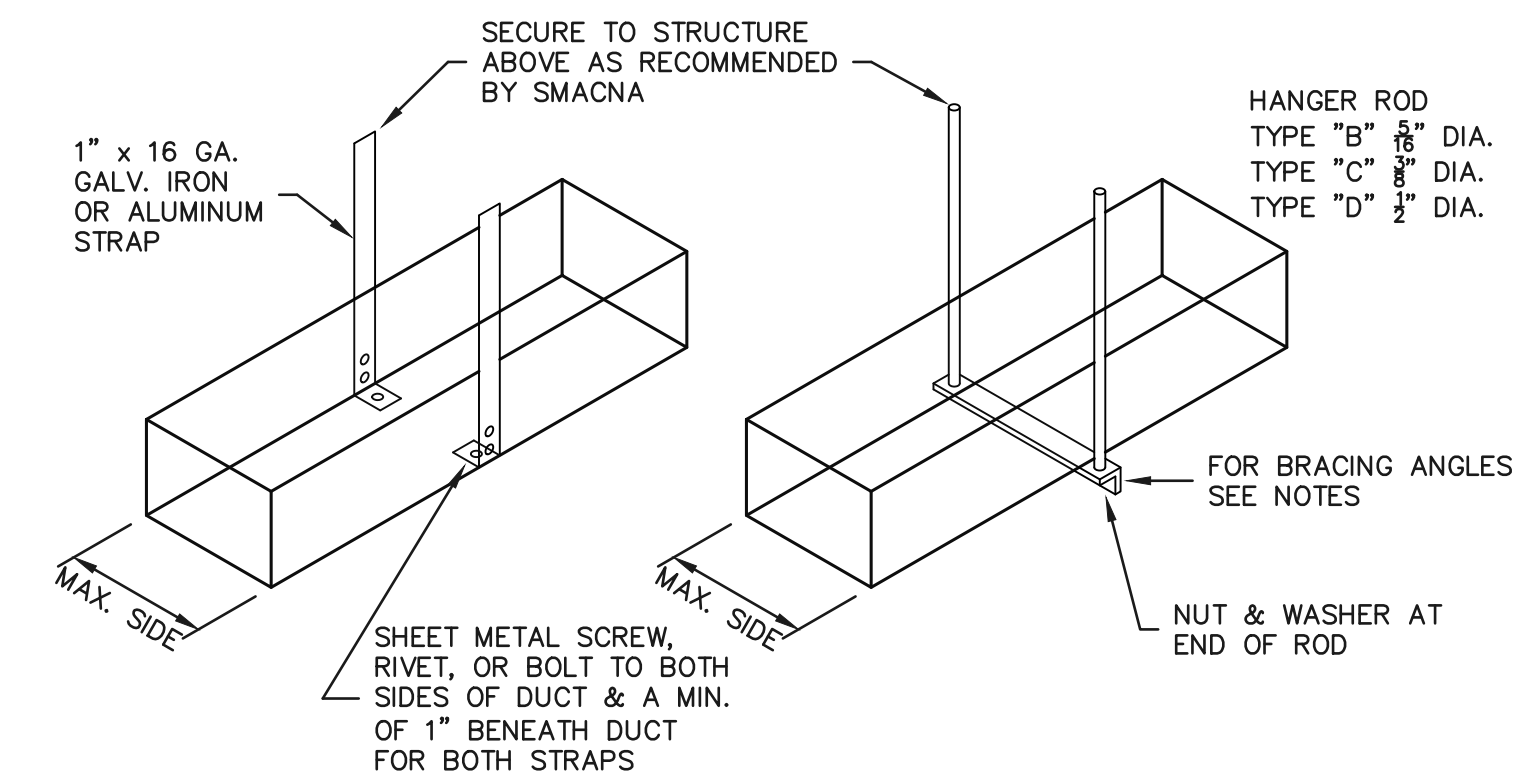


AIR-COOLED CONDENSING UNIT DETAIL
NO SCALE



NOTE:
(SUCTION LINE SHOWN) INSULATION EXTENDS ONLY LENGTH OF HANGER ON LIQUID LINES.



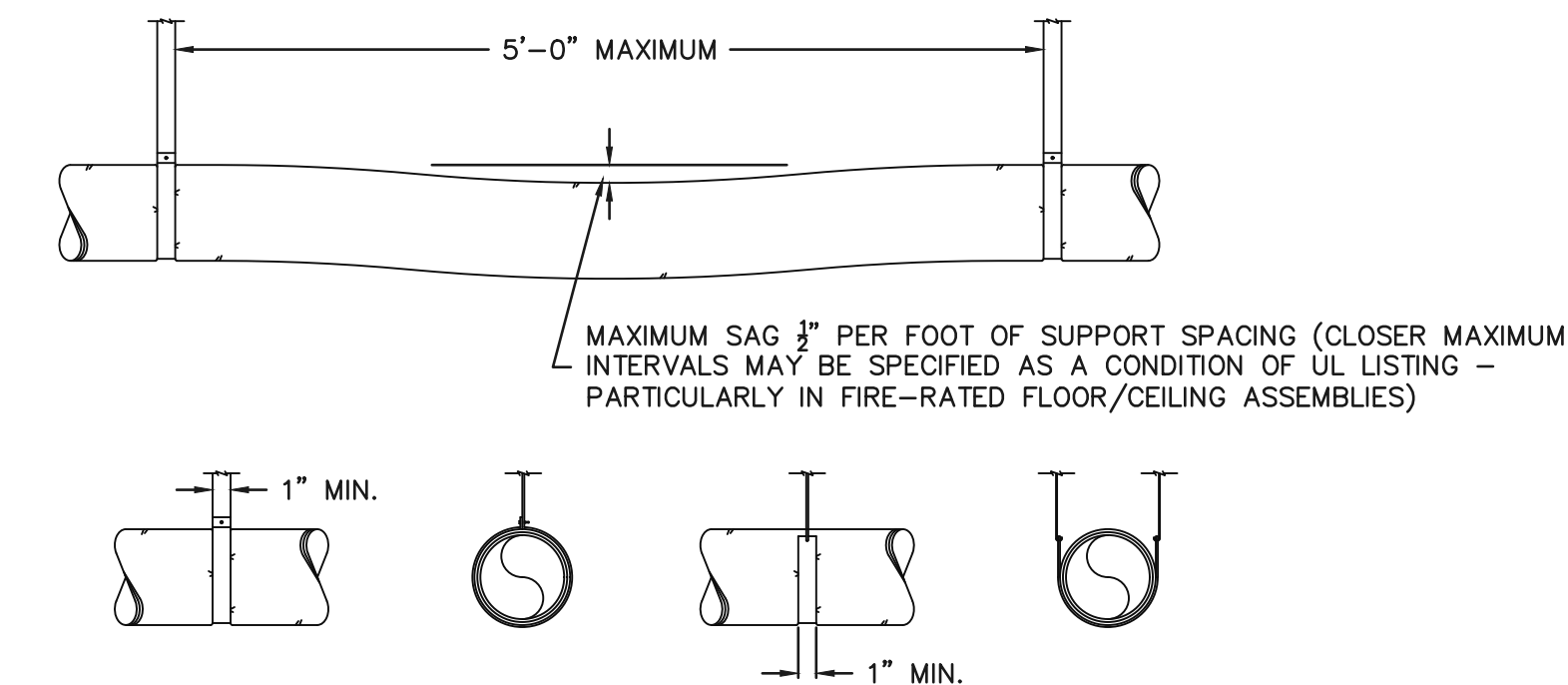
TYPE "A"
(8 FT. MAX. HANGER SPACING. ALSO PROVIDE 3 HANGERS AT EACH TAKE-OFF OR BRANCH.)

TYPE "B", "C", & "D"
(8 FT. MAX. HANGER SPACING)

DUCT DIMENSIONS (INCHES)	TYPE HANGER
UP THRU 12	A
13 THRU 18	A
19 THRU 30	A/B
31 THRU 42	B
43 THRU 54	B
55 THRU 60	B
61 THRU 84	C
85 THRU 96	C
OVER 96	D

- NOTES:
- FOR SEVERAL DUCTS ON ONE HANGER, TYPE "B", "C", OR "D" MAY BE USED. SIZE OF HANGER WILL BE SELECTED ON SUM OF DUCT WIDTHS EQUAL TO MAXIMUM WIDTH OF DUCT HANGER SCHEDULE.
 - SCHEDULES FOR ANGLES FOR BRACING: TYPE "B" - 1 1/2" x 1 1/2" x 1/4" ANGLE, MAX. SPACING 8'-0" CENTERS; TYPE "C" - 1 1/2" x 1 1/2" x 3/8" ANGLE, MAX. SPACING 8'-0" CENTERS; TYPE "D" - 2" x 2" x 1/4" ANGLE, MAX. SPACING 4'-0" CENTERS.

DUCT HANGERS
NO SCALE

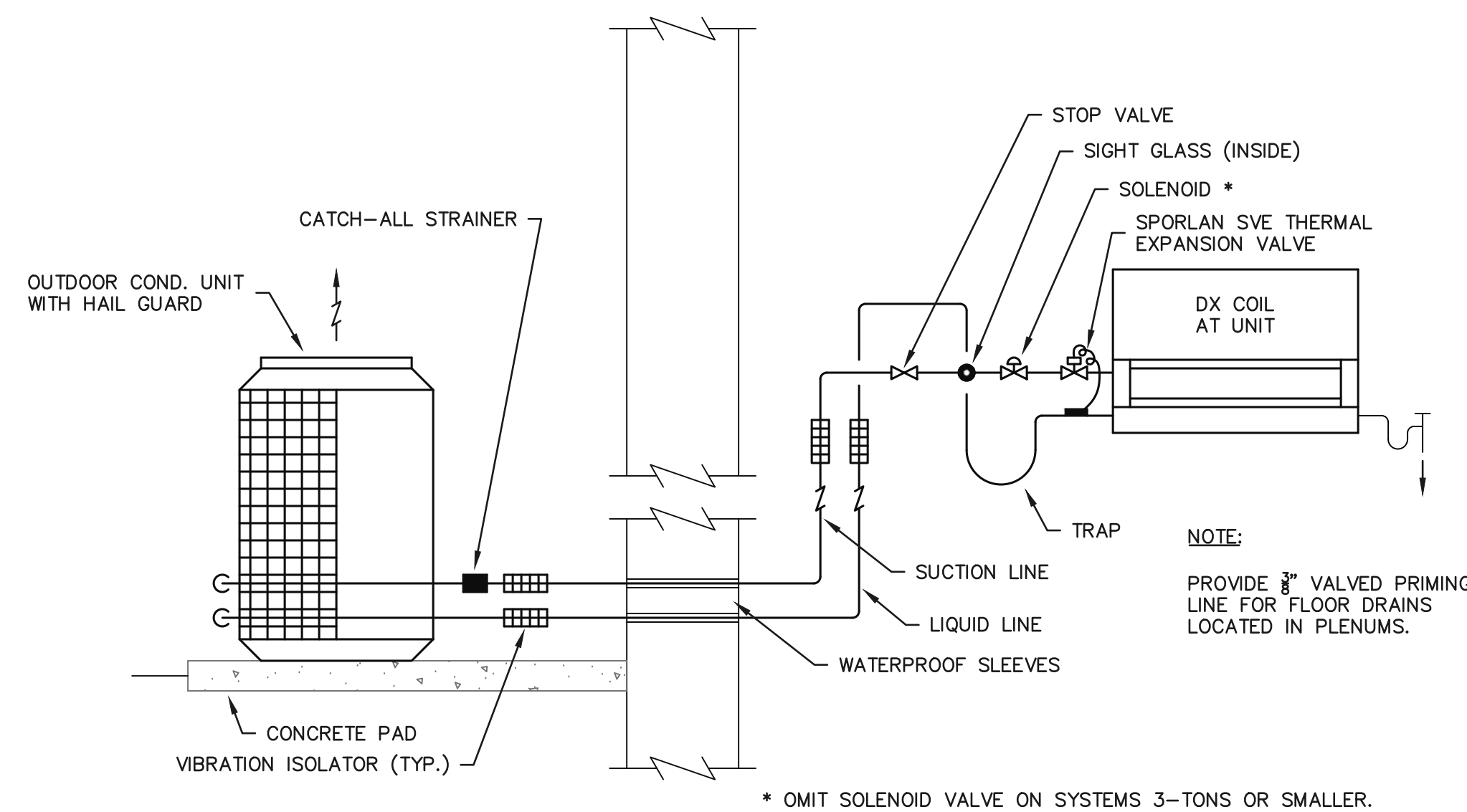


BAND CLAMP SUPPORT

BAND CLAMP SUPPORT WITH WIRE (OPTIONAL)

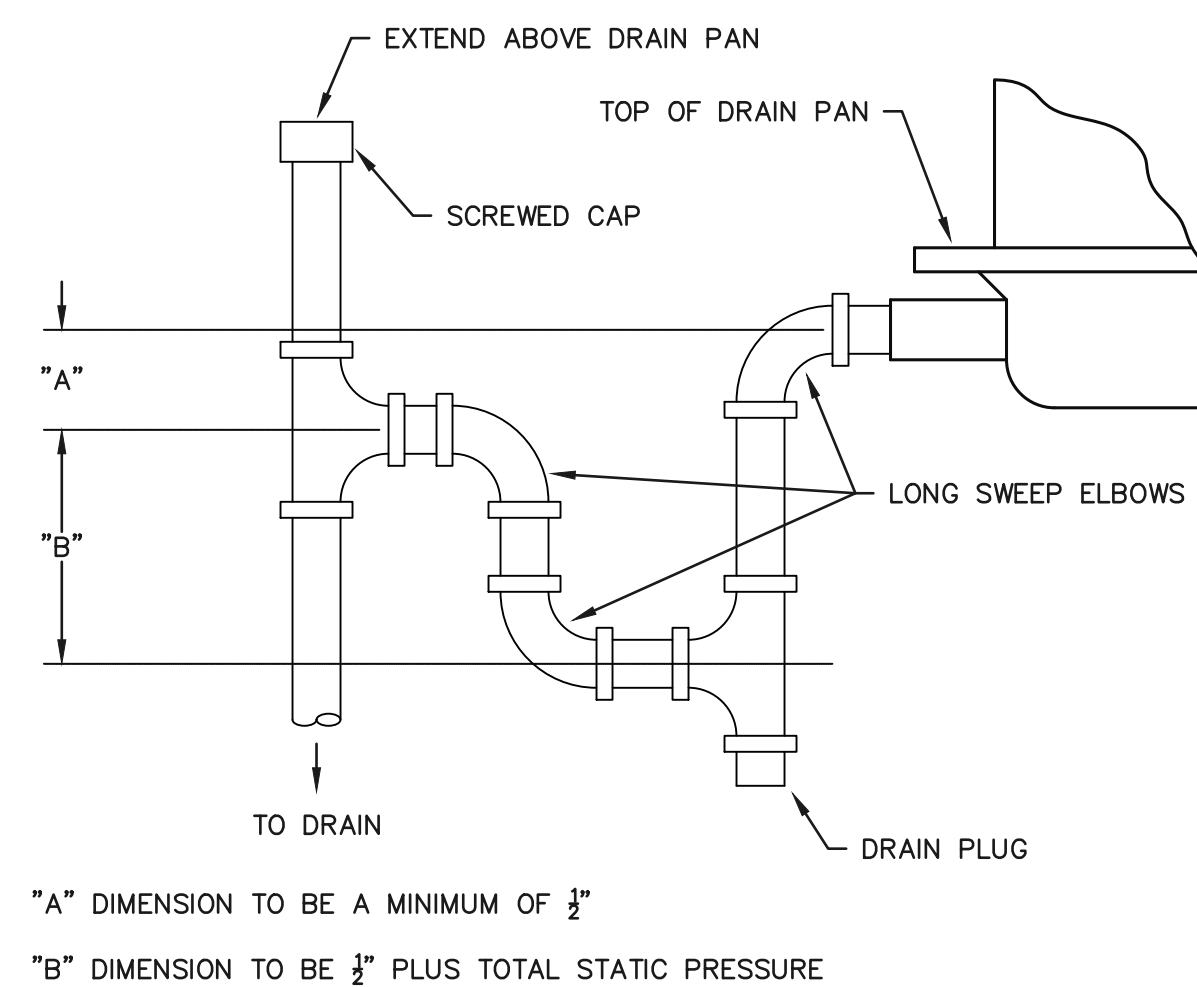
- NOTES:
- SUPPORT SYSTEM SHALL NOT DAMAGE DUCT OR CAUSE OUT OF ROUND SHAPE.
 - BENDS SHALL BE MADE WITH NOT LESS THAN 1 DUCT DIAMETER CENTERLINE RADIUS. DUCTS SHOULD EXTEND A FEW INCHES BEYOND THE END OF A SHEET METAL CONNECTION BEFORE BENDING. DUCTS SHALL NOT BE COMPRESSED.
 - THE MINIMUM LENGTH OF FLEXIBLE DUCT SHALL BE USED. "MAXIMUM LENGTH" REFERS TO THE PRACTICAL ROUTE BETWEEN CONNECTION POINTS BUT NOT TO THE DEGREE THAT THE MATERIAL IS OVERSTRESSED OR TO THE DEGREE THAT ALL AVAILABLE STRETCH IS REMOVED.
 - DO NOT PROVIDE EXCESS LENGTH OF FLEXIBLE DUCT IN CASE OF FUTURE BUILDING MODIFICATIONS.
 - REFER TO PAGES 3.33-3.39 OF THE SMACNA HVAC DUCT CONSTRUCTION STANDARDS METAL AND FLEXIBLE, THIRD EDITION, FOR FURTHER DETAILS.

FLEXIBLE DUCTWORK SUPPORT DETAILS
NO SCALE



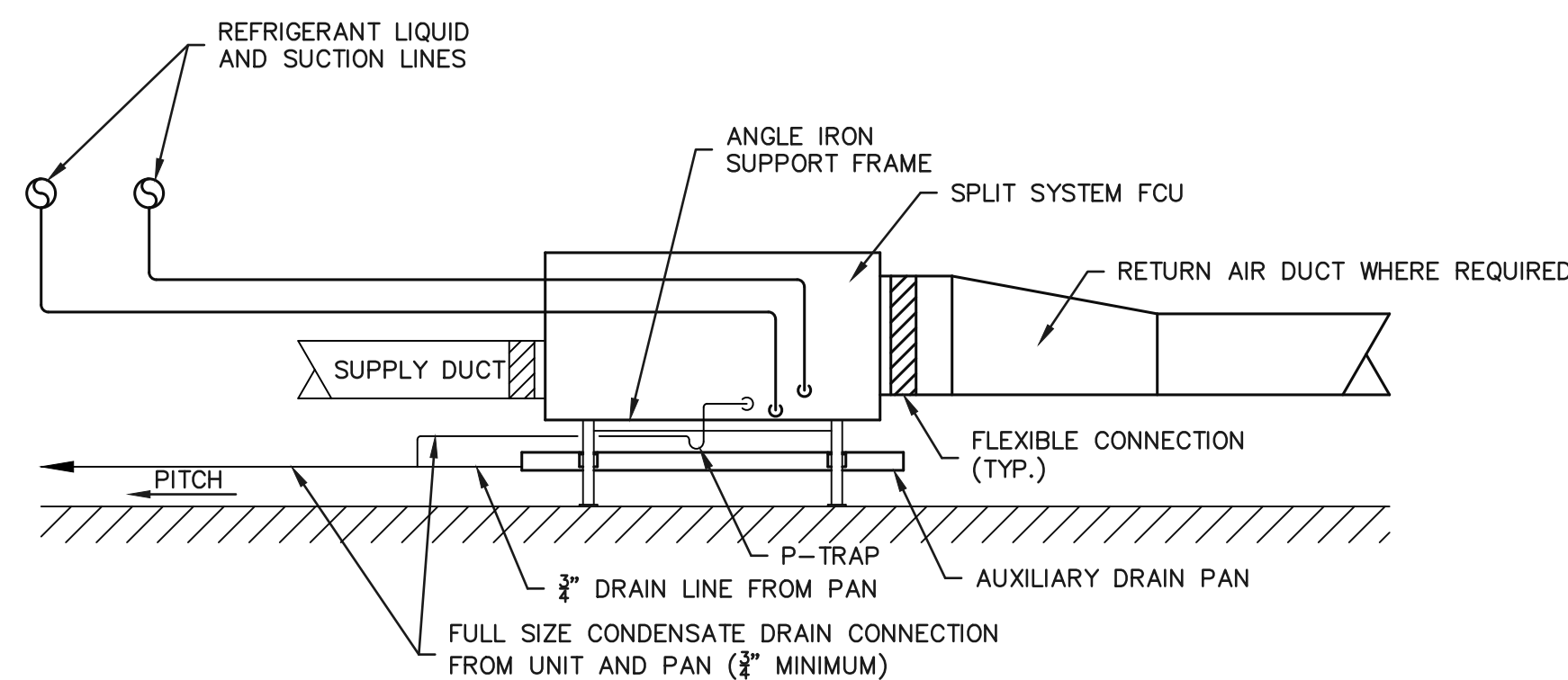
TYPICAL REFRIGERANT PIPING DIAGRAM
NO SCALE

DETAIL OF REFRIGERANT LINE HANGERS
NO SCALE

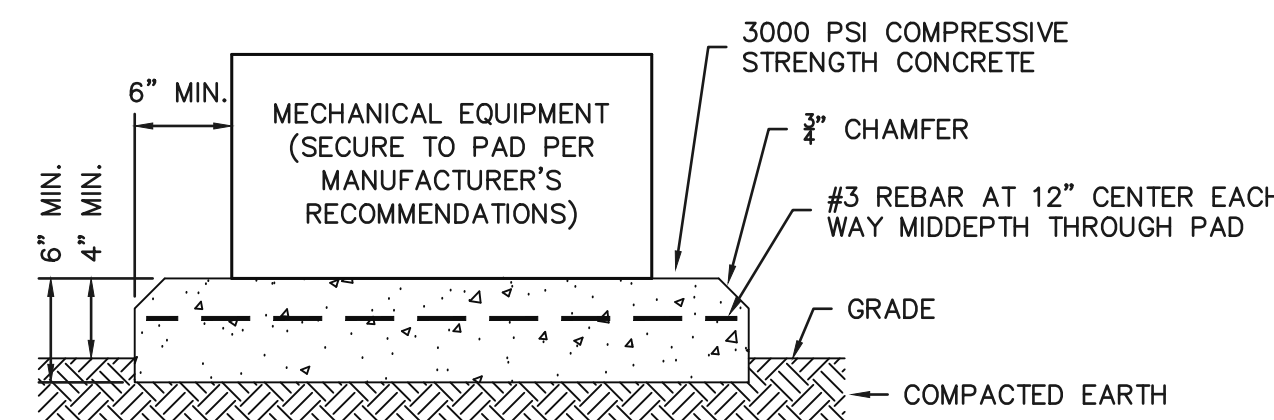


- NOTES:
- PROVIDE 3/8" VALVED PRIMING LINE FOR FLOOR DRAINS LOCATED IN PLENUMS.
 - CONDENSATE DRAIN LINE SHALL BE FULL UNIT CONDENSATE DRAIN CONNECTION SIZE (3/4" MINIMUM).

DRAIN TRAP FOR A.C. UNITS
NO SCALE



HORIZONTAL SPLIT SYSTEM FCU INSTALLATION DETAIL
NO SCALE



HOUSEKEEPING PAD ON GRADE

HOUSEKEEPING PAD DETAILS
NO SCALE